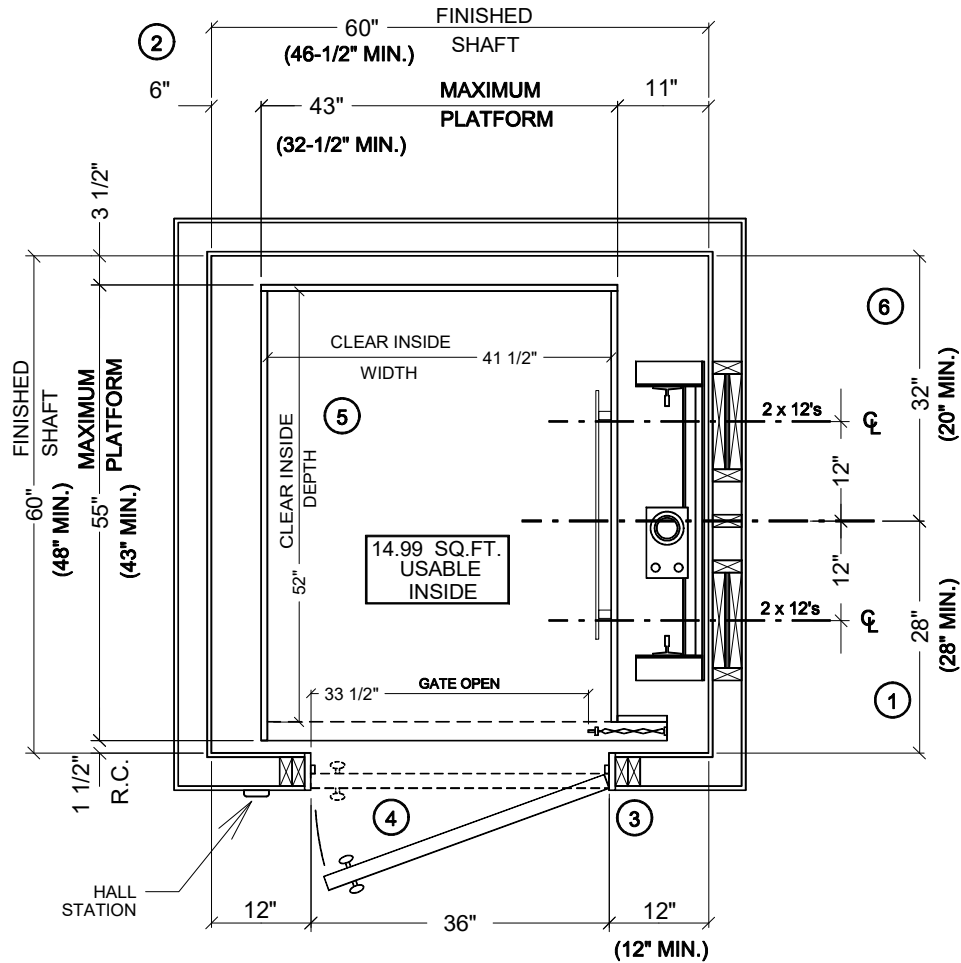


DRAWN:	CHECKED:	DATE:	REVISION:
G.P.	F.P.	4/17/18	NEW DRAWING



NOTES:

- IF PLATFORM SIZE IS REDUCED, THEN THE BLOCKING IS TO BE POSITIONED SUCH THAT IT IS CENTERED ON THE PLATFORM. (PLATFORM DEPTH / 2) + 2" = CENTERLINE OF RAIL BLOCKING OFF OF INSIDE FRONT WALL. (MIN. 23-1/2" DIMENSION)
- CAR TO WALL (CTW) DIMENSION IS 3-1/2" MIN.
- HOISTWAY DOORS AND FRAMES TO BE INSTALLED IN A 2" x 4" WALL CONSTRUCTION OR RECESSED INTO A DEEPER WALL CONSTRUCTION TO EQUATE TO A 2" x 4" WALL. THIS IS REQUIRED TO COMPLY WITH 3" x 5" RULE.
- HOISTWAY DOORS TO BE SOLID CORE (BY OTHERS.)
- CLEAR CAB DIMENSIONS BASED ON A 3/4" FLAT WALL CAB DESIGN. PICTURE FRAME AND FRAME / PANEL CABS - REDUCE CLEAR INSIDE WIDTH BY 1-1/2" AND CLEAR INSIDE DEPTH BY 3/4".
- MIN. CLEARANCE TO ALLOW FOR MOTOR/ BRAKE/ GEARBOX

STANDARD HOISTWAY PLAN

NOTE: ALL DIMENSIONS ARE APPROXIMATE
OVERSIZE CAB OPTION ASSUMED

THE INFORMATION CONTAINED HEREIN IS SOLELY OWNED BY RESIDENTIAL ELEVATORS, INC. ANY REPRODUCTION IN PART OR AS A WHOLE WITHOUT WRITTEN PERMISSION FROM RESIDENTIAL ELEVATORS, INC. IS STRICTLY PROHIBITED.



20 RESIDENTIAL DRIVE
CRAWFORDVILLE, FL
32327
ResidentialElevators.com
1-800-832-2004

JOB NAME:
**950#, RH RAIL, IN-LINE OPENING,
SCISSOR GATE, 15 SQ. FT.**

DRAWING NUMBER
**HYD HP1 S 15
60 x 60**